

Ø3.0mm D4/UPC - D4/UPC Simplex OS2 Patch Cable - Yellow Jacket



Products Description

The fiber optic patch cords are mainly used on patch panel or for the connection between outlets and terminal equipments. The quality of connectors and fibers are mainly determined by the insertion loss and return loss. We supply simplex D4-D4 Single mode OS2 fiber optic patch cords, these patch cords are with 9/125um sinble mode fiber, and connector types in PC, UPC polish are available. It's fully complied with IEC and Telcordia GR-326 standards; they are good prices, fast delivery and good looking and packing.

Other key words: SC-ST fiber optic patch cable; SC-ST fiber optic jumper.

Keyed Characteristics

- RoHS Compliant;
- Standard & custom configurations;
- Meets Telcordia-GR-326-CORE standards;
- Easy installation;
- Environmentally stable;
- Low insertion loss, high return loss;
- Ultra low back reflection;
- For 3.0mm, 2.4mm, 2.0mm jacket or 900um buffer;
- Single mode fiber: ITU - T G. 652D;
- Multi mode fiber: ITU - T G. 651;
- Fiber Min. Bending radius: 10D (Static).

Application

- Telecom;
- LAN, WAN;
- CATV;
- Sensor Systems.

Information, specifications and product offerings in this catalogue are subject to change without notice. Product photos and drawings are provided for the convenience of our customers and for reference only.

E-mail: sales@punofiber.com

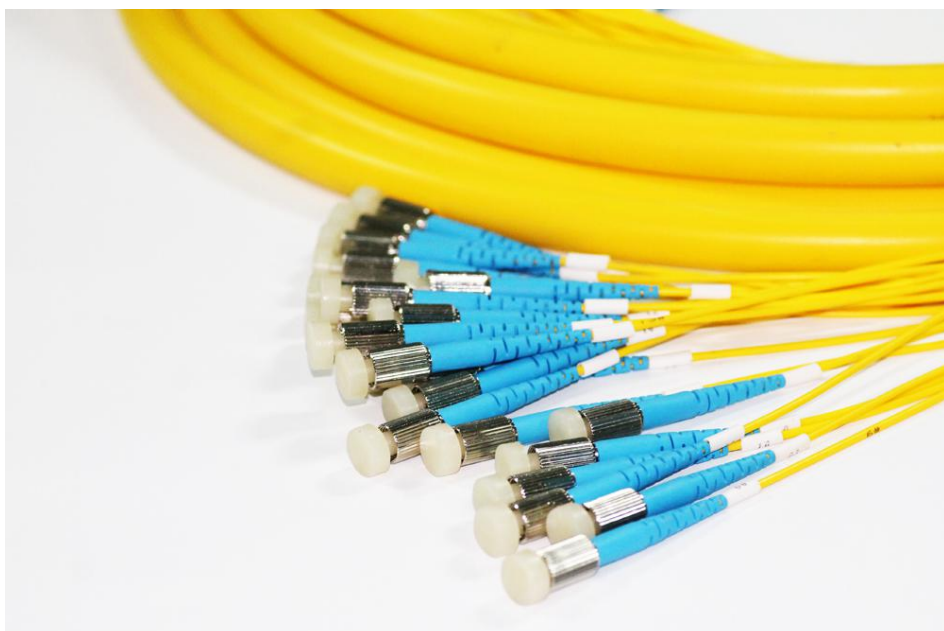
Website: www.punofiber.com

Connector

Measure	D4 Assembly	LC Assembly
Insertion Loss (dB @1310nm) Ferrule	< 0.25dB	< 0.25dB
Connector Repeatability	IL < 0.2 dB	IL < 0.2 dB
Mating Durability	≤0.2dB	
Durability	≥1000times	

Cable

No.	Items	Unit	Specification	
			G.657A1	
1	Mode Field Diameter	1310nm	μm	6.3-9.5±0.4
2	Cladding Diameter		μm	125.0±0.7
3	Cladding Non-Circularity		%	≤1.0
4	Core-Cladding Concentricity Error		μm	≤0.5
5	Coating Diameter		μm	245±10
6	Coating Non-Circularity		%	≤6.0
7	Cladding-Coating Concentricity Error		μm	≤12.0
8	Cable Cutoff Wavelength		nm	λ _{cc} ≤1260
9	Attenuation(max.)	1310nm	dB/km	≤0.5
		1550nm	dB/km	≤0.3
10	Macro-Bending Loss	1turn×7.5mm radius @1550nm	dB	≤0.08
		1turn×7.5mm radius @1625nm	dB	≤0.25



Information, specifications and product offerings in this catalogue are subject to change without notice. Product photos and drawings are provided for the convenience of our customers and for reference only.

E-mail: sales@punofiber.com

Website: www.punofiber.com